

ALBA

Alarm Clock Radio Instruction manual

CR-07PL



You'll soon be up and running

Looking forward to your new Alba alarm clock radio? Great. Then let's get you started.

Just follow this simple step-by-step guide and you'll be good to go.

Help and Guidance

We're here to help you get the most from your <enter product name>. Should you require any guidance, a simple solution can often be found online at:

www.argos-support.co.uk

If you still require further assistance, call one of our experts on 0345 604 0105.

If you require any technical guidance or find that your product is not operating as intended, a simple solution can often be found in the **Troubleshooting**

Contents

1. Safety information	
Safety information	1
Battery handling and usage	2
UK Mains plug information	2
2. Getting to know your alarm clock radio	
Accessories	3
Functions & Control	3
Battery backup	4
Standby mode	4
3. Using your alarm clock radio	
Setting the clock	4
Radio operation	5
Presetting your favourite radio stations	5
4. Dual alarms operation	
Setting Alarm 1 or Alarm 2	6
Checking alarm time	6
Snooze function	6
5. Sleep timer operation	
Setting sleep timer	7
6. Other information	
Technical specification	7
7. Product support	
Help and assistance	8
Disposal	9
Troubleshooting	9
Guarantee	10

section of these instructions, or online at www.argos-support.co.uk If you still require further assistance, call one of our experts on 0345 604 0105



Safety Information

Important – Please read these instructions fully before installing or operating

- This appliance is intended for domestic household use only and should not be used for any other purpose or in any other application, such as for non-domestic use or in a commercial environment.
- The ventilation should not be impeded by covering the ventilation openings with items, such as newspapers, table-cloths, curtains, etc.
- No naked flame sources, such as lighted candles, should be placed on the apparatus.
- The apparatus shall not be exposed to dripping or splashing and that no objects filled with liquids, such as vases, shall be placed on the apparatus.
- Ventilation
 - Allow at least a 10 cm gap all around the product.
 - This apparatus is not suitable for use in a tropical climate.
 - Prior to cleaning or other maintenance, the appliance must be disconnected from the supply mains.
 - Batteries (battery pack or batteries installed) shall not be exposed to excessive heat such as sunshine, fire or the like.
 - To protect the environment, use local recycling facilities for battery disposal.
 - Where the MAINS plug is used as the disconnect device, the disconnect device shall remain readily operable.
 - The marking plate is located at the bottom of the apparatus.
 - This means of disconnecting this apparatus from the mains supply is the mains plug. This should be unobstructed and readily operable at all time.



ALBA

Battery handling and usage

- Only adults should handle battery. Do not allow a child to use this apparatus unless the battery cover is securely attached to the unit.
- The battery type used in the unit is 2 x 1.5V AAA size batteries (not included) which are accessible and can be replaced.
- Remove the battery cover located at the bottom of the unit to remove the batteries.

UK Mains plug information

This appliance must be connected to a AC 230-240 volts 50Hz. AC supply by means of a three pin socket, and should be protected by a 3 Amp fuse.

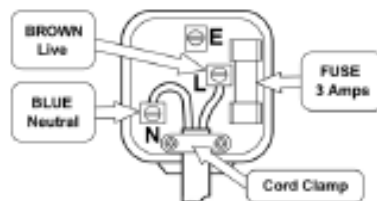
If the mains plug is unsuitable for the socket outlet in your home or is removed for any other reason, then the cut off plug should be disposed of safely to prevent the hazard of electric shock.

The wires in the mains lead on this appliance are coloured in accordance with the following code:

Blue – Neutral

Brown – Live

Under no circumstances should Neutral or Live wires be connected to the 'E' (Earth) terminal.



Please read and retain these instructions for future reference.

Getting to know your Alarm clock radio

You'll be up and running in no time

Ready? Let's begin

Please read these instructions carefully. They contain important information which will help you get the best from your product and ensure safe and correct installation and operation.

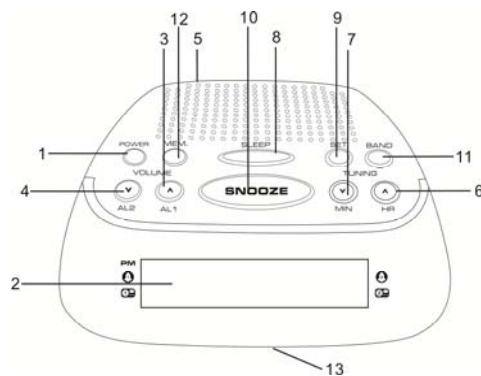
If you require any further assistance, our technical experts are happy to help. For full details, refer to the product support section at the end of these instructions.

Accessories included

- 1 x CR-07PL
- 1 x Instruction manual

Functions & Control

1. POWER
2. Display
3. VOL \triangle / AL1 button
4. VOL ∇ / AL2 button
5. FM ANTENNA
6. TU \triangle / HOUR button
7. TU ∇ / MIN button
8. SLEEP
9. SET
10. SNOOZE
11. BAND
12. MEM (Memory)
13. Battery Door





Indicator lights

- | | |
|------------------------------------|--------------------|
| 14. PM indicator (12 hour version) | 17. Alarm 2 buzzer |
| 15. Alarm 1 buzzer | 18. Alarm 2 radio |
| 16. Alarm 1 radio | |

Battery Backup

The clock, alarm and preset settings can be protected against AC power failure with the battery for a short period of time. If no backup battery is installed or the power failure is prolonged, you will need to set the clock, alarm and preset settings again.

Standby mode

Place the unit on a flat stable surface and plug the power cord into the mains socket.

- The unit is in standby mode
- "12:00" will flash on the display.

Using your Alarm clock radio

Setting the clock

1. In standby mode, while the display flashes repeatedly press **HOUR / MIN** to set the hours and minutes.
 - Press and hold **HOUR / MIN** to advance the hour and minute until the correct time is reached.
2. Press **SET** to confirm.
 - The display will stop flashing.

Power on/Radio mode

Press **POWER** to switch the unit on and enter the radio mode.

- The radio frequency will briefly appear on the display and then return to clock time.

Radio operation

1. Press **POWER** to turn on the radio.
 - The default FM radio frequency is 87.5 MHz.
2. Press **BAND** once to enter the AM radio mode.
 - The default AM radio frequency is 522 KHz.
3. Repeatedly press **BAND** to select the desired radio band.
4. Adjust the volume by repeatedly pressing **VOL+** / **VOL-**.
5. Repeatedly press **TU+** / **TU-** to tune into the desired station.
 - Press and hold **TU+** / **TU-** for auto forward or backward radio station searching.



Note:

- For the best FM reception, extend the FM aerial to its full length.
- For the best AM reception, rotate the unit slowly and horizontally.

Presetting your favourite radio stations

Up to 10 FM and 10 AM radio stations can be preset.

1. Follow steps in "RADIO OPERATION" and tune into the station that you wish to preset.
2. Press and hold **SET** for about 2 seconds, "P01" will flash on the display.
3. Press **SET** again to store the station.
4. Repeat steps 1 to 3 to store desired stations.



To listen to preset radio stations, repeatedly press **MEM** to select the desired radio station.

Dual alarms operation

Before setting the alarm time, make sure the Clock has been set.

Setting Alarm 1 or Alarm 2

1. In standby mode, press and hold **AL1 / AL2** until "12:00" flashes on the display.
2. While "12:00" is flashing, set the alarm time by repeatedly pressing **HOUR / MIN**.
 - Press and hold **HOUR / MIN** respectively for fast advance.
3. Repeatedly press **AL1 / AL2** to select the desired alarm mode (buzzer or radio).

Checking alarm time

Press and hold **AL1 / AL2** for 2 seconds, the alarm time will flash briefly then return to clock time.

To turn off the alarm, press **POWER** and the alarm will come on again at the set time on the following days.

To cancel the alarm, in standby mode, press **AL1 / AL2** until the alarm indicator light goes out on the display.

Snooze function

This function can be used to stop the alarm temporarily for about 9 minutes once the alarm is activated. When the snooze button is pressed, the alarm sounds will stop and sound again after about 9 minutes.

The alarm indicator light will flash.

Sleep timer operation

The sleep function is designed to automatically turn off the Radio.



Setting sleep timer

1. In Radio mode, repeatedly press **SLEEP** to select the desired sleep time from 90, 80, 70, 60, 50, 40, 30, 20 or 10 minutes.
2. The radio will be turned off after the set sleep time has elapsed.

To check remaining sleep time, press **SLEEP**.



To cancel sleep timer, press **SLEEP** until "OFF" is shown.

To turn off the radio before the sleep time has elapsed, press **POWER**.

Other information

Specifications

AM: 522-1620 KHz

FM: 87.5-108 MHz

Power source: AC 230V-240V ~50Hz, 5 W

Power consumption (clock only) : <1W

AM: 522-1620 kHz

FM: 87.5 – 108 MHz

Back-up Batteries : 2 x 1.5V "AAA" size batteries or equivalent(not included)

We apologise for any inconvenience caused by minor inconsistencies in these instructions, which may occur as a result of product improvement and development.

Product support

Help is always at hand

Help and assistance

If you require any technical guidance or find that your Alarm clock radio is not operating as intended, a simple solution can often be found in the **Troubleshooting** section of these instructions or online at www.argos-support.co.uk

If you still require further assistance, call one of our experts on 0345 604 0105. To help to give us give you a fast and efficient service please have the following information ready:

Model Ref :

Serial number

You can find these on the rating plate – a small information panel (usually a sticker or metal plate) on the rear of your product.

Date of purchase

This will be shown on your receipt

Local call rates applies*

Lines open 8am-7pm Monday to Saturday and 10am-4pm Sunday.

*Calls to Argos enquiry lines may attract a charge and set up fee from residential lines depending on your call plan/tariff. Mobile and other providers costs may vary, see www.bt.com/pricing for details.

For Security and training purposes, telephone calls to and from customer service centres maybe recorded and monitored. Calls from Republic of Ireland will attract international call charges.

section of these instructions, or online at www.argos-support.co.uk If you still require further assistance, call one of our experts on 0345 604 0105.

ALBA

Product support

Help is always at hand

Disposal



You should now recycle your waste electrical goods and in doing so help the environment. This symbol means an electrical product should not be disposed of with normal household waste. Please ensure it is taken to a suitable facility for disposal when finished with.

Visit www.recycle-more.co.uk, click on "bank locator" and enter your postcode to find your nearest recycling site.



If you are creating instructions, you may find the following links helpful:

www.environmentlaw.org.uk

www.hse.gov.uk/waste/waste-electrical

Troubleshooting

Observation	Potential cause / solution
The unit does not work	Does the socket that is being used have power? Is the unit switched on at the plug and the POWER button pressed?
No sound	Is the volume control set at minimum?
Radio reception weak	Extend or adjust the position of FM antenna or adjust the position of the AM radio.
Alarm function does not work	Has the alarm been activated? See P.6.
Sleep function does not work	Has the sleep function been activated by pressing the sleep button? See P.7.

If you require any technical guidance or find that your product is not operating as intended, a simple solution can often be found in the **Troubleshooting**.

Product support

Help is always at hand

ALBA

Your Alba Guarantee

This product is guaranteed for twelve months from the date of original purchase. Any defect that arises due to faulty materials or workmanship will be repaired free of charge (or if applicable the product will be replaced or the purchase price refunded) where possible during this period by the dealer from who you purchased the unit.

The guarantee is subject to the following provisions:

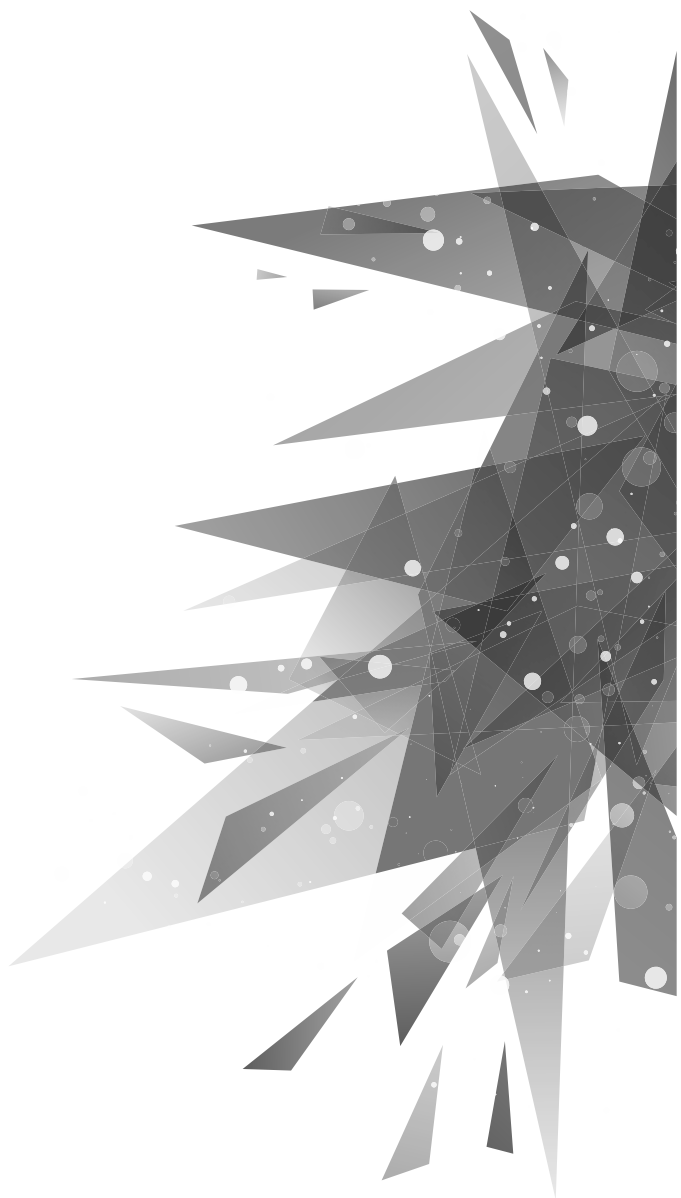
- The guarantee does not cover accidental damage, misuse, cabinet parts, knobs or consumable items.
- The product must be correctly installed and operated in accordance with the instructions contained in the manual.
- It must be used solely for domestic purposes. The guarantee will be rendered invalid if the product is re-sold or has been damaged by inexpert repair.
- Specifications are subject to change without notice.
- Alba disclaim any liability for loss or damage arising from the breakdown of the product.
- This guarantee is in addition to and does not diminish your statutory or legal rights.

Guarantor: Argos Limited - 489 - 499 Avebury Blvd. - Milton Keynes - MK9 2NW

section of these instructions, or online at www.argos-support.co.uk If you still require further assistance, call one of our experts on 0345 604 0105.

ALBA

ALBA



Contact:

www.argos-support.co.uk

Helpline: 0345 604 0105